

# HV JUICE

Dec/Jan 17-18



# HAUFF TECHNIK P.3



## This Issue



**GRID20/20  
MONITORING  
SYSTEM**  
PAGE 6

www.transnet.co.nz

**ORMAZABAL  
SUBSTATIONS**  
PAGE 2

**TRKT TRIFURCATING KITS**  
PAGE 5

**NEW RANGE - THE  
POWER GRIPZ GLOVES**  
PAGE 7

100% NEW ZEALAND



## LEADING PROVIDER OF PERSONALISED SOLUTIONS

Founded in 1967, Ormazabal pioneered extensible GIS switchgear technology for the electrical network industry. Ormazabal has enjoyed global expansion and has product installed in more than 110 countries worldwide. Ormazabal has always been at the centre of creating solutions to customer requirements through technological innovation.

The increasing complexity of energy distribution networks across different markets has motivated vendors to transition away from a 'cookie cutter' approach to substation design, to a matrix based one that is application- and market-specific. Ormazabal's substation solutions are always designed with a customer's unique set of requirements in mind.

Ormazabal design, manufacture, and supply prefabricated transformer and switching substations worldwide. They offer a unique range of features such as visual impact, sustainability, install ease & cost, ability for off-site fabrication & test among others.

### KIOSK SUBSTATION

This range of compact, prefabricated kiosk type substation configurations and sizes is suitable for electrical networks with rated voltage of up to 40.5kV. Supplied direct from the factory as a complete unit, the kiosk comes standard with an enclosure with a selection of optional extras.

Designed to house a wide range of medium voltage configurations, units are tested and supplied from the factory as a unit.

#### FEATURES

- Fast, straightforward replacement of MV switchgear on site
- Reduced visual impact
- Insulation chamber under self-ventilating cover
- Accessibility of MV connectors through cover interlocked with earthing switch
- MV switchgear with earthing switch in all functions
- Reduced dimensions and weight
- AB Arc Flash compliant
- No vault equipment requirement for Arc flash containment
- Available as complete LV/TX/MV substation configuration
- Smart Grid Reed
- EN 50532 & IEC 62271-202

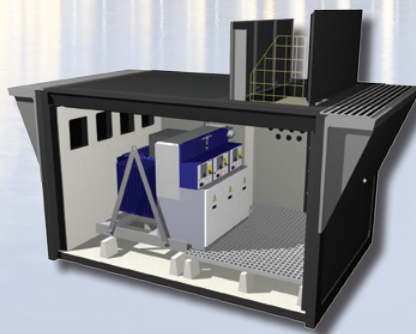


### MiniSUB

The miniSUB is a compact prefabricated transformer substation, installed underground for use in distribution networks up to 36 kV. The main advantage of the miniSUB is its robustness, reliability, IAC classification, and ability to protect both people and property against internal faults.

#### FEATURES

- Equipotential operating surface
- House up to 2 x 1MVA transformers
- No access to live parts
- Dielectric liquid collection pits
- Fully factory-assembled and equipped
- Suitable for limited space areas
- MV and LV cables input/output through sealed feedthroughs
- Minimal visual, environmental & acoustic impact
- Smart-Grids ready substation
- EN 50532 & IEC -EN 62271-202
- Ventilation modelling and testing optimized with Ormazabal transformers



### Ormacontainer

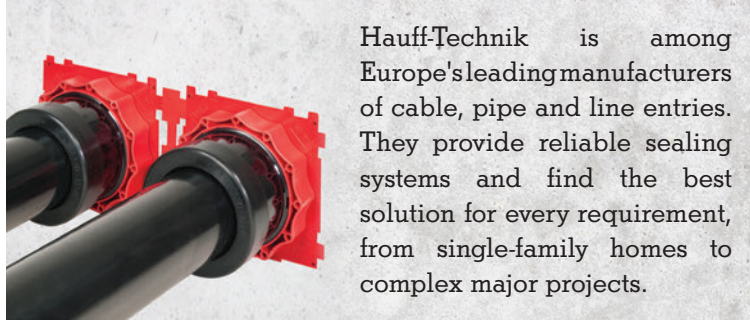
Ormacontainers are prefabricated, mobile factory-tested metallic substations, developed to meet temporary or urgent needs for switching or transformer substations.

#### FEATURES

- Same equipotential earthing throughout
- Transformer fence with protection mesh
- Industrialized uniform quality
- Plug & play philosophy for MV
- Walk in type switchgear operation
- No need for special permits for transport
- Simple and quick installation
- Easy connection of MV cables thanks to access holes in the base
- Longer operational life against harsh environmental conditions



# NEW AGENCY



Hauff-Technik is among Europe's leading manufacturers of cable, pipe and line entries. They provide reliable sealing systems and find the best solution for every requirement, from single-family homes to complex major projects.

Electricity, telecommunication, water, waste water, gas or district heating - whenever a perfectly safe sealing of building entries is required, Hauff-Technik offers the best possible solution. Innovative cable and pipe entries, building entries and trenchless house connections of professional quality, all from one source. Out of the box or customized products for highest efficiency, user-friendliness and longevity in all buildings.

## CABLE SEALING SYSTEM FEATURES

- Stepless adjustment to required wall thickness on-site
- Plug-in frame system for block assembly on-site
- Connection of system
- Insert of system covers for sealing of cables and connection of smooth and corrugated ducts
- Available for double walls/element walls

sealing possible on both sides

## THE HAUFF-TECHNIK RANGE

- CABLE SEALING SYSTEM 150
  - Single wall insert with one-sided connection on the outside of the building
  - Double wall insert with connection on both sides
  - Single wall insert with plug-in socket
  - Slanted wall insert
  - System cover with shrink sleeves
  - Split system cover
  - Segmento for gentle securing of cables like Fibre
  - Flange surface seal
  - Floor entry with tight bend radius Hateflex spiral hose
- CEMENT COATED WALL SLEEVE
- DOWEL FLANGE FOR RETROFIT INSTALLATION
- PRESS SEALS
  - Standard press seal
  - Corrugated pipe press seal
  - Split press seals for already installed cables
  - Press seal with duct connection
- KBS PASSIVE FIRE PROTECTION PRODUCTS
  - KBS Brushable Coatings
  - KBS Pipe Seals

**hauff  
technik**



**NEW  
AGENCY**



25 YEAR WARRANTY ON TE PORCELAIN INSULATORS



Contact us for more information



Ph 0800 442 182  
+64 9 274 3340

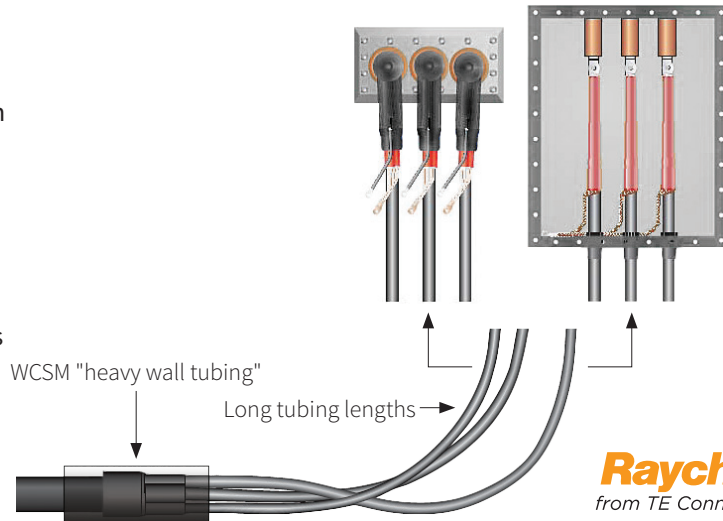
[sales@transnet.co.nz](mailto:sales@transnet.co.nz)

[www.transnet.co.nz](http://www.transnet.co.nz)



## FOR 11KV, 22KV, & 33KV XLPE CABLES

Trifurcating kits provide the facility to terminate 3/Core XLPE cable into small cable boxes where the dimensions required for a standard 3/Core termination are difficult to maintain. This simple solution gives you the advantage of performing a crossover outside the cable box, and the installation of a single core cable accessories rather than a 3/Core. Kit consists of a full length heat-shrink tube (to allow for re-jacketing of the cable cores which lets you cut to length to suit an on site application), breakout boot, phase markers & protection sleeve.



**Raychem**  
from TE Connectivity



## TN277HP | HIGH VOLTAGE | DETECTOR

The TN277HP is an ideal tool for checking the presence of AC high voltages and AC low voltages in cables, wall outlets, fuses etc. It provides a non-contact detection for AC voltages from 50V - 132kV. It is also suitable for industrial, utility and mine safety applications.

### FEATURES

- Non-contact detection of live voltage
- Detect residual & induced voltages
- Sturdy tough case
- Meets the requirements of ASTM F1796-09, IEC 61243-1 & IEC 61243-2
- Check grounding equipment
- 2 ranges for selection:  
LOW : 50V~1.5kV  
HIGH : 1.5kV~132kV
- Circuit test function
- Low power consumption

Operating Temperature	0°C ~50°C
Dimensions	318 (L) x 75 (W) x 71 (D)mm
Weight (incl. battery)	Approx. 277g
Power Source	9V (6LF22) x 1 Alkaline battery
Safety Standards	EN 61326- 1 EN 61000-4-2 EN 61000-4-3
Accessories	Instruction Manual, Carry Case, Battery





## CLEAR VISION INTO YOUR GRID



Data Analytics



Communications



Intelligent Devices

### PLUG & PLAY INSTALLATION

**NO  
NEED  
FOR**

Special Tools  
On-site Configuration  
Highly Qualified Personnel  
Transformer De-energizing



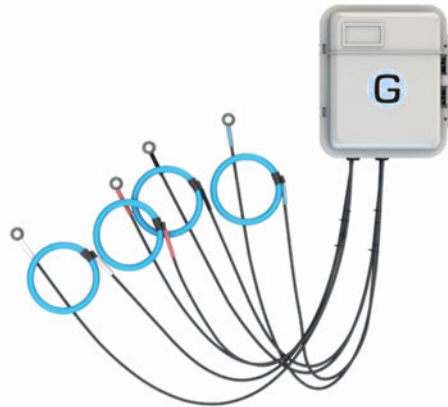
The OptaNODE Distribution Transformer Monitor (DTM) enables standard transformers to become 'smart transformers' with simple retrofittable hardware OptaNODE DTM and PDTM devices. Get a clear vision of the LV network & distribution transformer health.

It's fast & easy to install, compact & robust with accurate patented outdoor rated, UV stable current sensors. Voltage, Current, Demand & Temperature feedback is aggregated & sent wirelessly to Grid20/20 servers for real-time analytics & reporting.

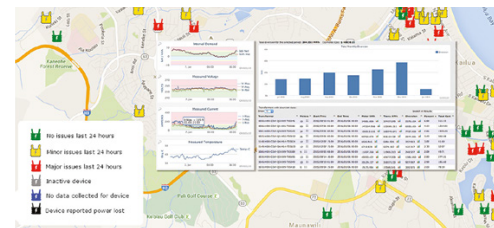
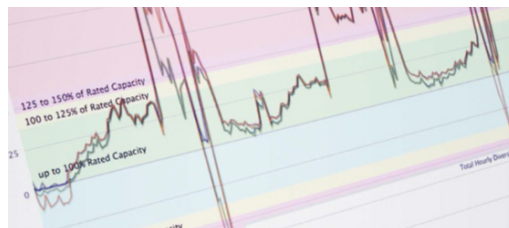
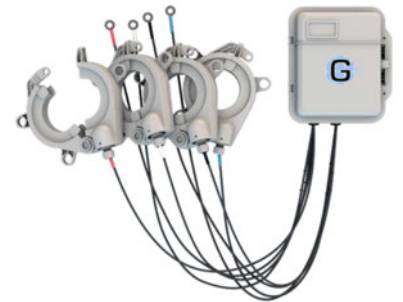
The Head End Server System stores collected data plus analytics and reporting focused on asset health. Overloaded & underutilised transformers are detected instantly & current/voltage issues are concisely identified.

### POWERFUL INTRA-GRID INTELLIGENCE IN THE PALM OF YOUR HAND

- Quick and easy, plug & play deployment
- Designed for Pole-mount & Pad-mount Transformers
- Reverse energy (Distributed Generation)
- LV Distribution analysis
- Outage Notification (Last-Gasp)
- Energy Balancing & theft detection
- Easiest and most complete solution for asset feedback on LV network



**GRID20/20**<sup>®</sup>  
Optimize Energy Efficiency



Datapoint	(per phase where applicable)
BI-DIRECTIONAL ENERGY (0.5% ANSI CLASS)	[KWHR] ACTIVE ENERGY [KVAHR] APPARENT ENERGY [KVARHR] REACTIVE ENERGY
RMS VOLTAGE	[V] INSTANTANEOUS; MAXIMUM; MINIMUM
RMS CURRENT*	[A] INSTANTANEOUS; MAXIMUM; MINIMUM
LINE CYCLE PERIOD	[SECONDS] 1/HZ
TEMPERATURE	[C] INTERNAL TEMP SENSOR
POLLING INTERVAL	[MINS] 5/15/30/60

\*Standard 1000A max. Optional 'High Current' version 3200A Max

**VIEW THE FULL RANGE ONLINE**





## GET A GRIP ON SAFETY

**NEW**

Ultimately linemen know keeping the power on is all in their hands, but ordinary gloves just weren't designed for the real world, in-the-air work they do every day. Linemen need a better grip on the tools, small parts and apparatus they use, to work more efficiently, keep drop zones safer and get the job done, no matter what conditions they face.

### FR120 FEATURES

- The Power Gripz Fire-Water Resistant Work Glove lined with Kevlar & Thinsulate
- A water resistant, FR120 insulated 40cal/CM2 work glove that is Arc Rated, Cut Resistant, and Flame Resistant
- Features a cut-resistant liner and wristlet made with 100% Kevlar

- An inner layer of 3M Thinsulate Fr 120 protects from heat/flame exposure
- The proprietary Power Gripz grip pads reinforce on the fingertips and palm enhance the durability and protection while maintaining high dexterity
- 40cal/cm<sup>2</sup> Arc Rated
- Kevlar Stitching
- Top Grade Cow Hide
- Flame Resistant
- Cut Resistant Category A4
- Water Resistant



**ULTIMATE PROTECTION. MAXIMUM COMFORT. ENHANCED SAFETY.**

## POWERFLEX 80-813 FLAME & CUT RESISTANT GLOVES

## INNOVATION IN PROTECTION SOLUTIONS

**NEW**

### 80-813 FEATURES

- Outstanding flame resistance, high cut protection and ergonomic design
- Arc Flash Hazard/Risk Category 2\*
- Exclusive composite yarn provides exceptional cut resistance
- Soft foam coating to ensure great flexibility and a secure grip in a variety of environments
- Ergonomic design for superior comfort and reduced hand fatigue



\*Arc Flash - NFPA 70E - Test Method/Standard: ASTM F1959-05 - Result: Hazard/Risk Category (HRC) 2 - Arc Rating (ATPV) 12.0 cal/cm<sup>2</sup>

**Ansell**

# Deck the Halls

## Happy Holidays!



TransNet New Zealand Ltd

### Auckland

78 Cryers Road  
East Tamaki  
Auckland  
NEW ZEALAND  
Ph 0800 442 182  
Fax 0800 442 183  
PO Box 39 383  
Howick, Auckland

### Wellington

10 Petone Ave  
Petone  
Wellington  
NEW ZEALAND  
Ph 04 576 2530  
Fax 04 576 0040  
PO Box 39 383  
Howick, Auckland

NEW ZEALAND

sales@transnet.co.nz

### TransNet Tonga

#### Ma'ufanga

Small Industries  
Ma'ufanga  
TONGA  
Ph +67 627 939  
Fax +67 627 976  
PO Box 2932  
Nukualofa

TONGA

transnet@kalianet.to



**WIN**  
**A CHILLY BIN**  
**SCOOTER!**

Get your **FREE** TransNet beach ball with every order placed from 1 December 2017 to 31 January 2018\*, upload a photo of it to Facebook with the hashtag **#TransNetHaveABall** and like our page **TransNetNZ** to be in to win this cool chilly bin scooter! Prize drawn 28th February 2018.



**\*While stocks last.**  
**Terms and conditions available on our website.**

We'd like to take this opportunity to thank you for all your support this year. 2017 has been busy with some exciting new agencies added to our portfolio of quality international brands, and 2018 is already shaping up to be even more exciting for us.

As always we never close – although there won't be anyone in the office on the stats, if you need us just call 0800 442 182 for assistance. Please note that courier companies reduce their runs over the holiday period so order early to ensure you don't miss out.

Once again, thank you for all your support this year. Have a happy and safe festive season and enjoy the summer sun with your families and friends, and we'll see you back next year!

The team at TransNet



TransNet NZ Ltd has made every reasonable effort to ensure the accuracy of this information and it is to the best of our knowledge correct and reliable. Under no circumstances does this constitute an assurance of any particular quality or performance and users should independently evaluate the suitability of products for their desired application. All information in this publication including pricing, drawings, illustrations, images and graphic designs are reflections of our current understanding. TransNet NZ Ltd reserves the right to make any adjustment to this information at any time. Our liability for the products outlined in this publication is set forth in our standard terms and conditions of trade. In case of any potential ambiguities or questions, please contact us for clarification.

